

# Borders and Corners

---

One traditional type of carpet design consists of a central field surrounded by one or more borders. Figure 11 shows a contemporary Turkish example. The rectangular central field, which features a blue background, is enclosed by a series of borders of varying widths. Each of these borders consists of one or more motifs repeated along the border's entire extent. Many of Colenbrander's carpet designs are of this type. A close examination of such designs reveals how Colenbrander used the characteristics of point paper to construct his borders. The border used on the design *Worp/Jet* is a simple example.



Figure 11. Turkish carpet, author's collection.

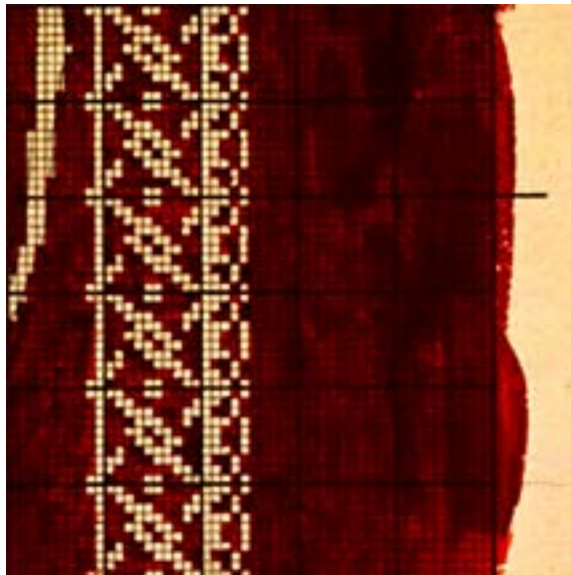


Figure 12. Detail of *Worp/Jet*, Gemeentemuseum Den Haag.